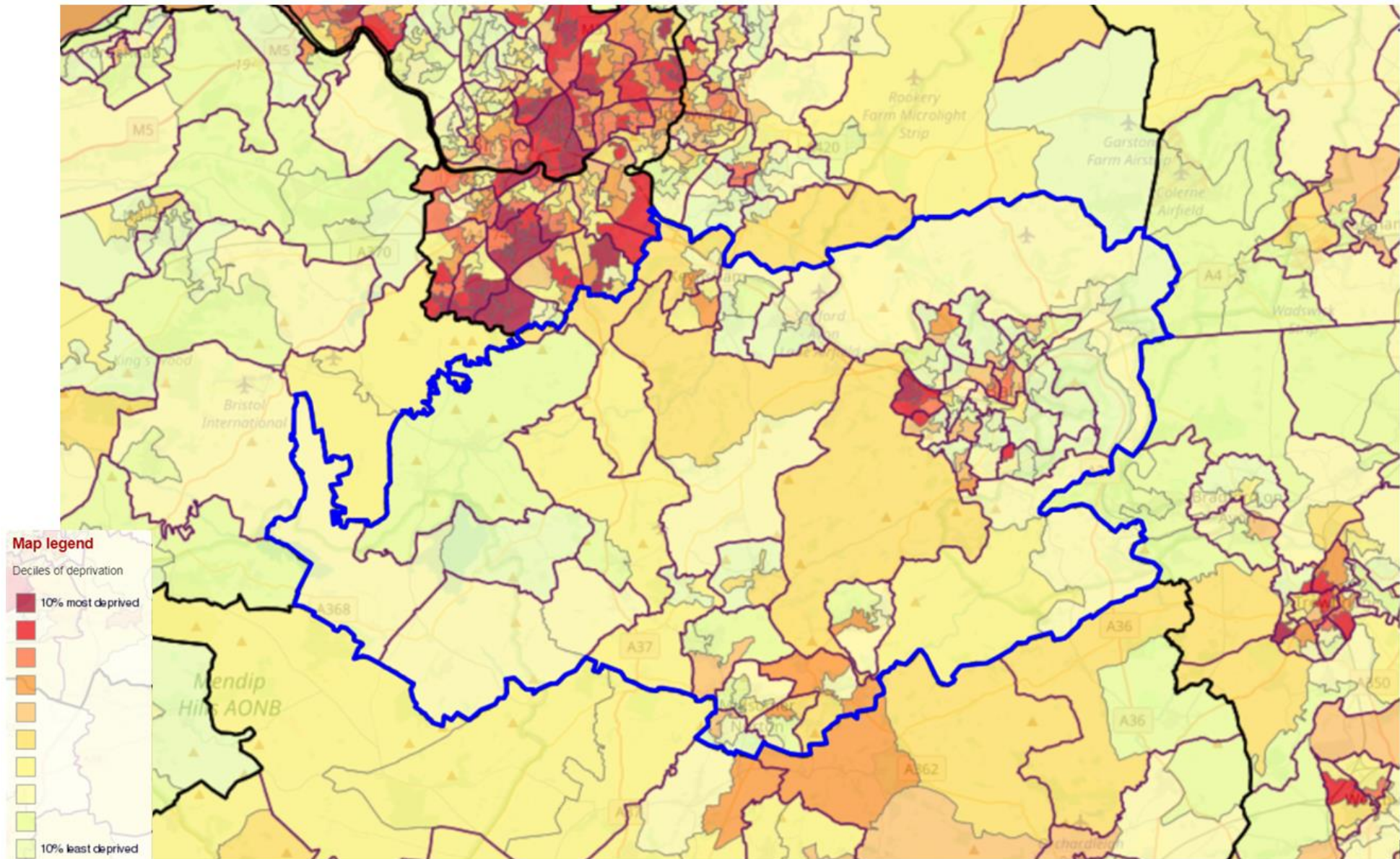


Index of Multiple Deprivation (IMD) 2015 BANES



Equality & Equity

Equity and **equality** are two strategies we can use in an effort to produce fairness. **Equity** is giving everyone what they need to be successful. **Equality** is treating everyone the same. **Equality** aims to promote fairness, but it can only work if everyone starts from the same place and needs the same help.

